

Adaptive Employee Experience Guide for Android!

Step-by-step guide for transitioning to the new isolved interface.

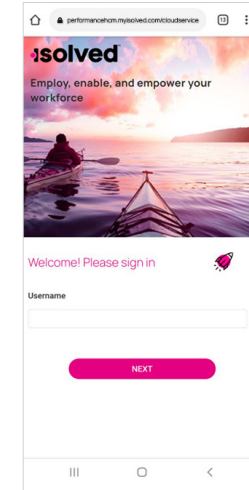
1 Step 1

With your phone, please take an image of the QR code* to open the home page.



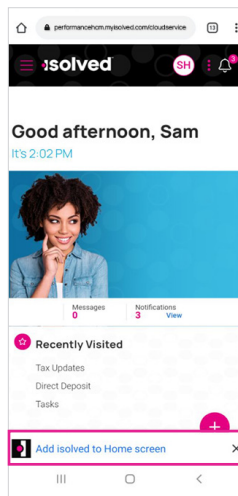
2 Step 2

Log into the homepage with your Username and Password.



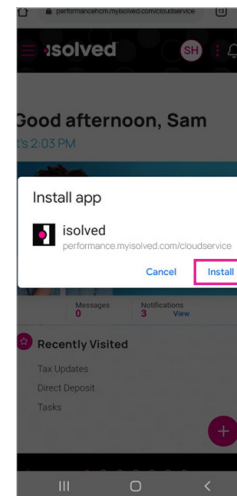
3 Step 3

Once logged in, you will be prompted at the bottom to install the app to your Home Screen. Tap the notification to open the install screen.



4 Step 4

Select the "Install" link from the list of options.



5 Step 5

The isolved "app" will be added to your mobile home screen for simplified access.

